

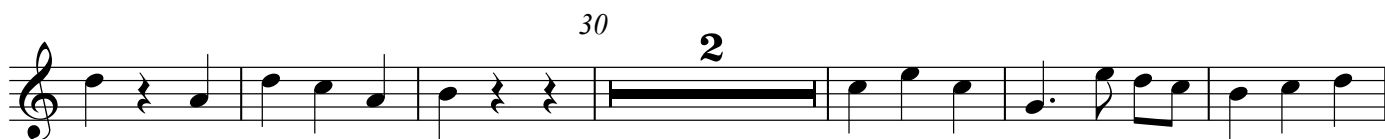
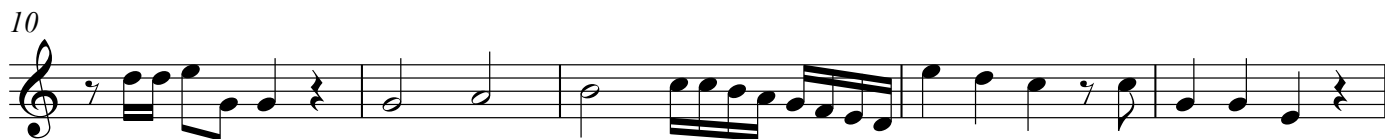
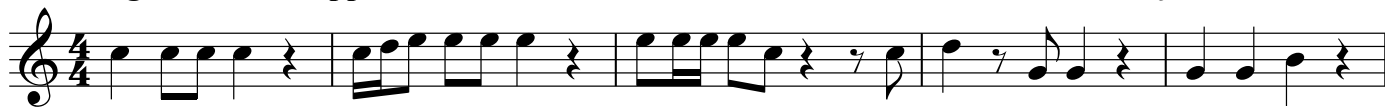
Symphony No. 5

Arranged by Federic Palmer

William Boyce
(1710-1779)

Allegro ma non troppo

5



Soprano Recorder 2

65

70

75

80

85

90

95

100

105

110

115

120

Detailed description: This musical score is for the Soprano Recorder 2 part, covering measures 65 to 120. It is written on a single treble clef staff. The key signature has one sharp (F#), and the time signature is 4/4. The music begins at measure 65 with a series of quarter notes. Measures 66-67 feature a melodic phrase with a slur and a fermata. Measure 68 contains a half note. Measures 69-74 consist of quarter notes with rests. Measure 75 has a quarter rest followed by a sixteenth-note triplet. Measures 76-79 are quarter notes. Measure 80 has a quarter note followed by a half rest. Measures 81-84 are quarter notes with rests. Measure 85 has a quarter note with a sharp sign above it, followed by quarter notes with rests. Measures 86-89 are quarter notes with rests. Measure 90 has a quarter note with a dot, followed by quarter notes. Measures 91-94 are quarter notes. Measure 95 has a quarter note with a slur and a fermata. Measures 96-99 are quarter notes. Measure 100 has a half note. Measures 101-104 are quarter notes. Measure 105 has a quarter note with a dot. Measures 106-109 are quarter notes. Measure 110 has a half note with a slur and a fermata. Measures 111-114 are eighth-note pairs. Measures 115-118 are quarter notes. Measures 119-120 are quarter notes with rests, ending with a double bar line.